

## CHARACTERISTICS

- SAE METRIC, BSP, NPTF THREADS AVAILABLE
- OPERATES UP TO 500 BAR (7.200 PSI)
- OPERATES WITH OIL OR GREASE
- ALL COMPONENT ARE NICKEL-PLATED, HIGH RESISTANCE TO CORROSION
- CE AND ATEX MARKING
- THE BASES ARE ALWAYS SUPPLIED COMPLETE WITH STANDARD 'O' RINGS AND FIXING SCREWS
- THE TWO OUTPUTS ARE COMBINED BY REPLACING THE ADAPTER. JUST TAKE ONE ITEM OF STOCK
- AIR BLEED VALVES BUILT INTO BASE
- SECURE AND CONTROLLED LUBRICATION
- ASSEMBLING SIMPLE AND FLEXIBLE WITH LOW MAINTENANCE COSTS
- ABILITY TO REPLACE THE DOSE WITHOUT DETACHING THE PIPES

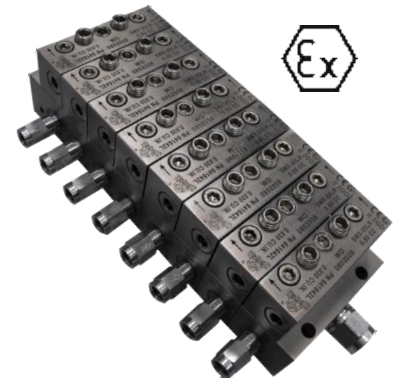
## ATEX NICKEL PLATED MODULAR PROGRESSIVE DISTRIBUTOR SMO-SMX METERING ELEMENTS FOR THE EXACT BREAKDOWN OF OILS AND GREASE

The modular system consists of two main components: the base and the metering elements. The modular progressive distributor is available in two sizes: "SMO miniature" and "SMX standard".

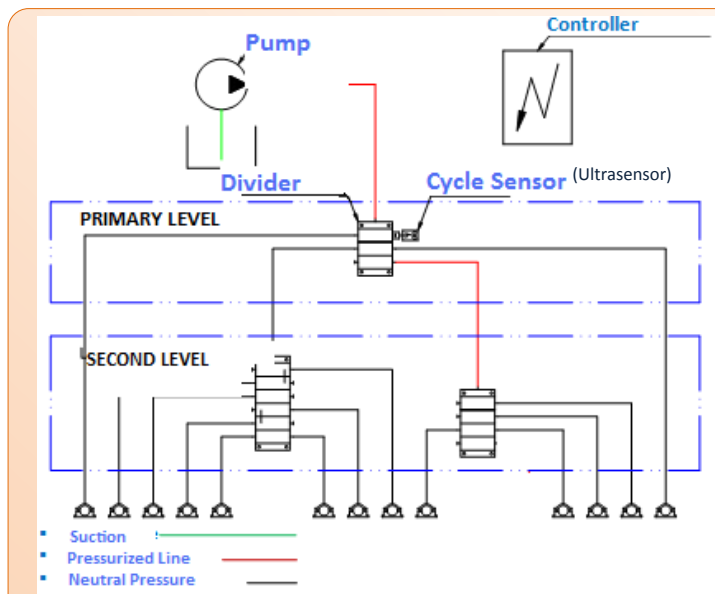
Conventional bridging pieces are eliminated. Bridging elements have been introduced and these interconnect and discharge to the adjacent element.

The distributor assembly principle enables factory floor distributor assembly to accommodate grouping of lubrication points.

The base assembly can be mounted and piped up without the metering elements. This provides the most advantageous routing of pipe work and the elements can then be fitted to suit. The system can be easily extended and the modular concept provides low cost replacement of component.

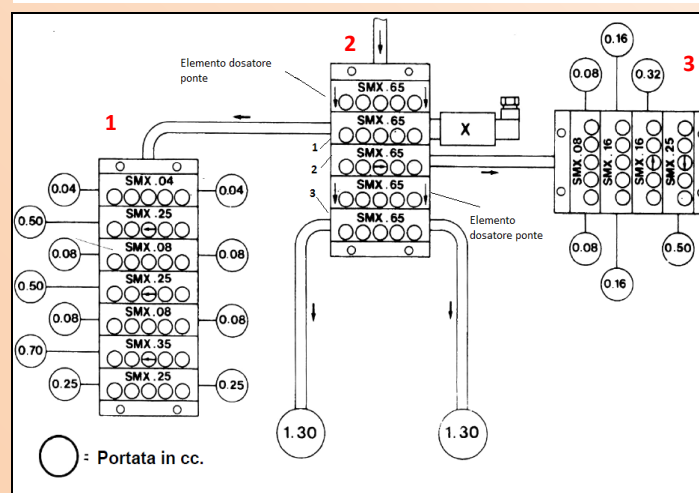


## OPERATION PRINCIPLE



The base assembly can be mounted and piped up without the metering elements. This provides the most advantageous routing of pipe work and the elements can then be fitted to suit.

The system can be easily extended and the modular concept provides low cost replacement of component.



The SMX65 metering element (1) pilots a block of 7 metering elements SMX delivering 2.60cc./cycle.

The SMX65 metering element (3) pilots a block of 4 metering elements SMX delivering 1.3cc/cycle.

The SMX65 metering element (2) directly lubricates two point of the machine.

The cycle is controlled by the contact "X".

## APPLICATION

- MACHINE TOOLS
- TEXTILES
- HEAVY INDUSTRY



## ADVANTAGES

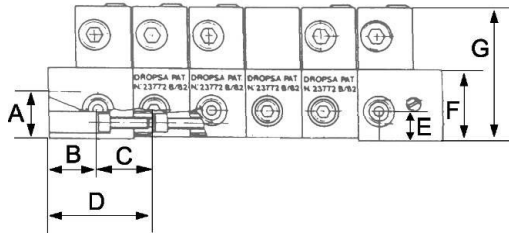
- Conventional tie rods are eliminated. There is no maximum limitation on the number of elements which can be used on the assembly.
- Auxiliary by-pass elements can be installed in the assembly to accommodate an increase or decrease in points without disturbing the base assembly or pipework
- Lubricant volume can be easily increased or decreased during system commissioning or service without disturbing the base assembly on pipework

## FLOWRATE METERING ELEMENT

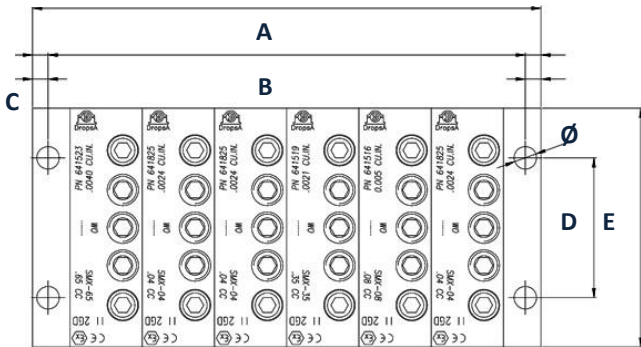
SMX METERING ELEMENT (*)								SMO METERING ELEMENT			
DELIVERY PER OUTLET		1 OR 2 OUTLETS		DELIVERY PER OUTLET		1 OR 2 OUTLETS		DELIVERY PER OUTLET		1 OR 2 OUTLETS	
CC.	CU. IN.	Symbol	Part No.	CC.	CU. IN.	Symbol	Part No.	CC.	CU. IN.	Simbolo	Codice
0,04	0.0024	SMX 04	<b>641825</b>	0,40	0.025	SMX 40	<b>641520</b>	0,04	0.0024	SMO 04	<b>641720</b>
0,08	0.005	SMX 08	<b>641516</b>	0,50	0.030	SMX 50	<b>641521</b>	0,08	0.005	SMO 08	<b>641716</b>
0,16	0.010	SMX 16	<b>641517</b>	0,60	0.036	SMX 60	<b>641522</b>	0,16	0.010	SMO 16	<b>641717</b>
0,25	0.015	SMX 25	<b>641518</b>	0,65	0.040	SMX 65	<b>641523</b>	0,25	0.015	SMO 25	<b>641718</b>
0,35	0.021	SMX 35	<b>641519</b>	0,00	0.000	BY PASS X	<b>641514</b>	0,00	0.000	BY PASS O	<b>641714</b>

## DIMENSIONS

(\*) Approvati secondo specifiche Automotive



SMO - SMX DIMENSIONS														
Type	A		B		C		D		E		F			
	mm	in	mm	in	mm	in	mm	in	mm	in	mm	in	mm	in
SMO	18.5	0.72	16	0.62	20.60	0.80	30	1.17	12.5	0.72	30	1.17	50	1.9
SMX	20	0.78	20.2	0.78	23.42	0.91	35	1.36	12.5	0.72	30	1.17	56	2.2



SMO - SMX DIMENSIONS							
Type	C		D		E		Ø
	mm	in.	mm	in.	mm	in.	
SMO	4,2	0.16	42	1.63	68	2.6	6
SMX	5,0	2	44,45	1.73	76	2.9	7.2

N° Elements	SMX DIMENSIONS				SMO DIMENSIONS			
	Hole spacing [mm] rounded	Hole spacing [inches] rounded	Overall Length [mm] rounded	Overall Length [inches] rounded	Hole spacing [mm] rounded	Hole spacing [inches] rounded	Overall Length [mm] rounded	Overall Length [inches] rounded
3	83.22	3.28	93.02	3.66	72.4	2.85	80.4	3.17
4	106.64	4.2	116.44	4.58	93.2	3.67	101.2	3.98
5	130.06	5.12	139.86	5.51	114	4.49	122	4.8
6	153.48	6.04	163.28	6.43	134.8	5.31	142.8	5.62
7	176.9	6.96	186.7	7.35	155.6	6.13	163.6	6.44
8	200.31	7.89	210.11	8.27	176.4	6.95	184.4	7.26
9	223.73	8.81	233.53	9.19	197.2	7.76	205.2	8.08
10	247.15	9.73	256.95	10.12	218	8.58	226	8.9
11	270.57	10.65	280.37	11.04	238.8	9.4	246.8	9.72
12	293.99	11.57	303.79	11.96	259.6	10.22	267.6	10.54
13	317.41	12.5	327.21	12.88	280.4	11.04	288.4	11.35
14	340.83	13.42	350.63	13.8	301.2	11.86	309.2	12.17
15	364.25	14.34	374.05	14.73	322	12.68	330	12.99
16	387.67	15.26	397.47	15.65	342.8	13.5	350.8	13.81
17	411.09	16.18	420.89	16.57	363.6	14.32	371.6	14.63
18	434.5	17.11	444.3	17.49	384.4	15.13	392.4	15.45
19	457.92	18.03	467.72	18.41	405.2	15.95	413.2	16.27
20	481.34	18.95	491.14	19.34	426	16.77	434	17.09

## THE BASE

The base is made up of a minimum of three segments:

- Inlet base
- Intermediate base
- End base

And can be increase i unlimited number by addition of intermediate sections.

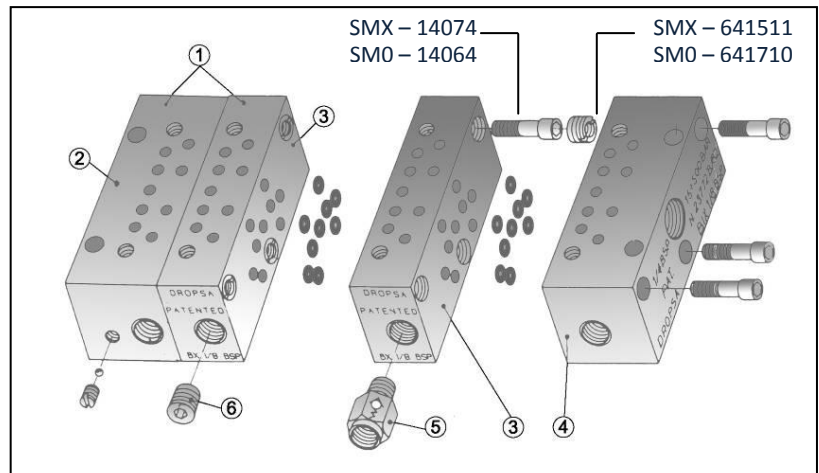
This revolutionary system makes the assembly easy and flexible; there is not need to determine in advance the size of the base, just add on distributors in unlimited number by means of very simple threaded inserts supplied for the assembly ( Patented).

This simple technique allows the system to operate even at very high pressure without any leakage in the assembly.

There is also the possibility of ordering with one part number only, the end base + the intermediate base already assembled.

Simply add on the inlet base and you have a three base assembly.

**With just 3 screws!!!!**



Ref.	Description	SMO		S Y M B O L	SMX			S Y M B O L
		1/8 BSP	1/8 NPTF		1/4 BSP	1/4 NPTF	7/16-20 UNF	
	Inlet Thread	1/8 BSP	1/8 NPTF		1/4 BSP	1/4 NPTF	7/16-20 UNF	
	Outlet Thread	1/8 BSP	1/8 NPTF		1/8 BSP	1/8 NPTF	7/16-20 UNF	
4	Inlet base	<b>641711</b>	<b>643562</b>	B10	<b>641512</b>	<b>643541</b>	<b>643800</b>	BIX
3	Intermediate base	<b>641712</b>	<b>643563</b>	B0	<b>641513</b>	<b>643542</b>	<b>643801</b>	BX
2	End base	<b>641713</b>	<b>643564</b>	BF0	<b>641515</b>	<b>643561</b>	<b>643802</b>	BFX
5	Check valve	<b>92335</b>	<b>641564</b>		<b>92335</b>	<b>641564</b>	<b>642029</b>	
6	Plug	<b>3232098</b>	<b>3232095</b>		<b>3232098</b>	<b>3232095</b>	<b>642031</b>	

## ACCESSORIES

Description	SMX	SMO
M 1/4 NPTF - F 1/4 BSP Reduction	3077166	
M 1/8 NPTF - F 1/8 BSP Reduction	3077090	
M 1/4 BSP - F 1/4 NPTF Reduction	3077059	
M 1/8 BSP - F 1/8 NPTF Reduction	3077075	
Bases Assembly screws	0014074*	0014064*
Threaded Inserts	641511*	641710*
Elements Assembly Screw	0014242*	0014077*
Single Line adaptor	0641708	
<b>Base and Element assembly kit</b> (N°3 Bases Assembly screws - N°3 Threaded Inserts - N°2 Elements Assembly Screw - N° 1 Single Line adaptor )	3140770	3140769

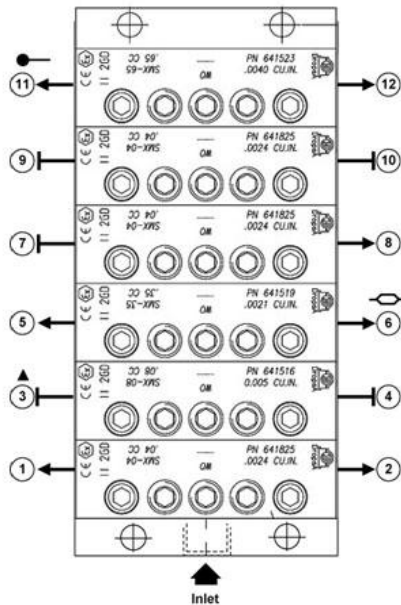
\* Ordered separately  
(Sold in boxes of 500 or add the "-1" suffix for purchasing in single multiples )

## INFORMAZIONI PER L'ORDINE

### ORDER EXAMPLE

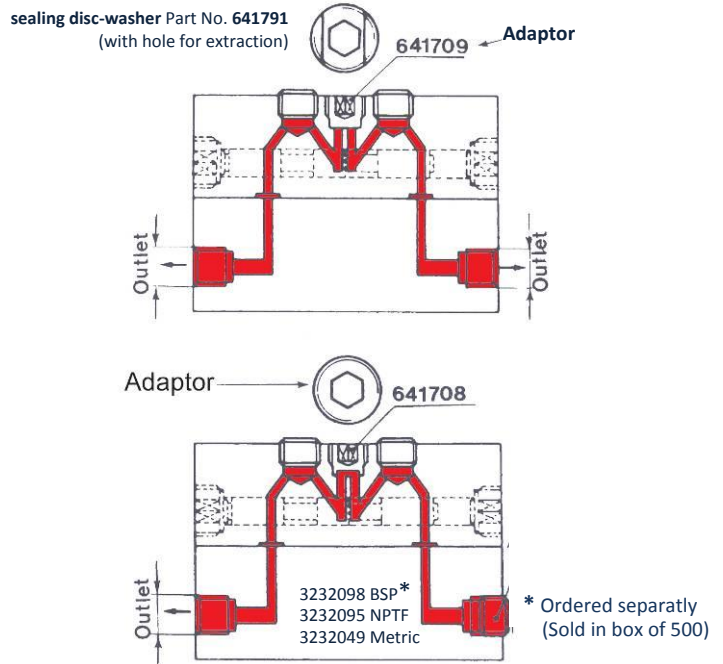
**SMO - 6 (M08 - M16LR - M25CC - M08D - M25R - M25C)**

Note: the assembly is seen vertically and the outlets are in sequence; starting from the bottom (inlet) from left to right. Symbol ?LR? refers to bridge elements.

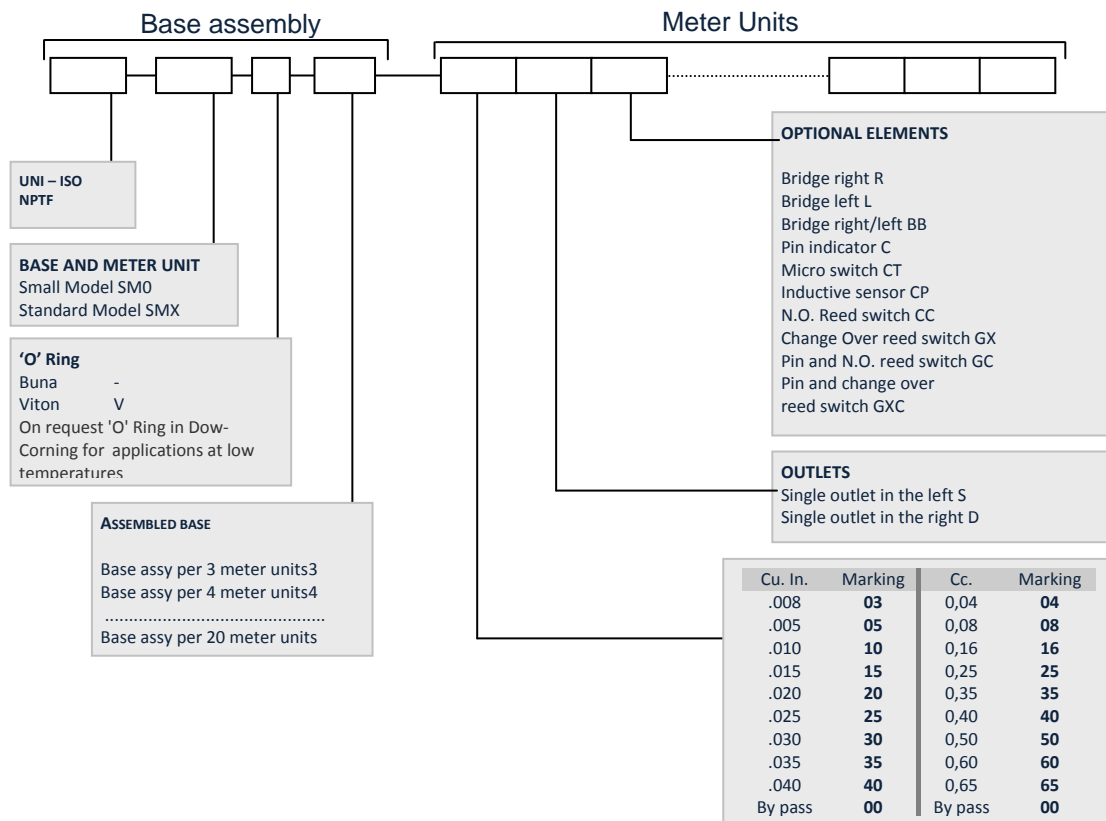


### SINGLE AND DOUBLE OUTLET CONVERSION

It is possible to double the delivery of a single element by replacing the Adapter Part No. 641709 with the Adapter Part No. 641708 as shown in the drawing below. When converted into single, plug off the second outlet..



### HOW TO ORDER



<a href="mailto:sales@dropsa.com">sales@dropsa.com</a> <a href="http://www.dropsa.com">www.dropsa.com</a>	<b>ITALIA</b> Dropsa SpA t. +39 02-250791	<b>U.K.</b> DropsA (UK) Ltd t. +44 (0)1784 431177	<b>GERMANY</b> Dropsa Schmiertechnik GmbH t. +49 (0)211 39 40 11	<b>FRANCE</b> AME Dropsa t. +33 (0)1 39 93 00 33
	<b>U.S.A.</b> Dropsa USA Incorporated t. +1 586-566-1540	<b>AUSTRALIA</b> Dropsa Australia Ltd. t. +61 (02)-9938-6644	<b>BRAZIL</b> Dropsa do Brazil t. +55 (0)11-563-10007	<b>CHINA</b> Dropsa Lubrication Systems (Shanghai) Co., Ltd t. +86 (021) 67740275